

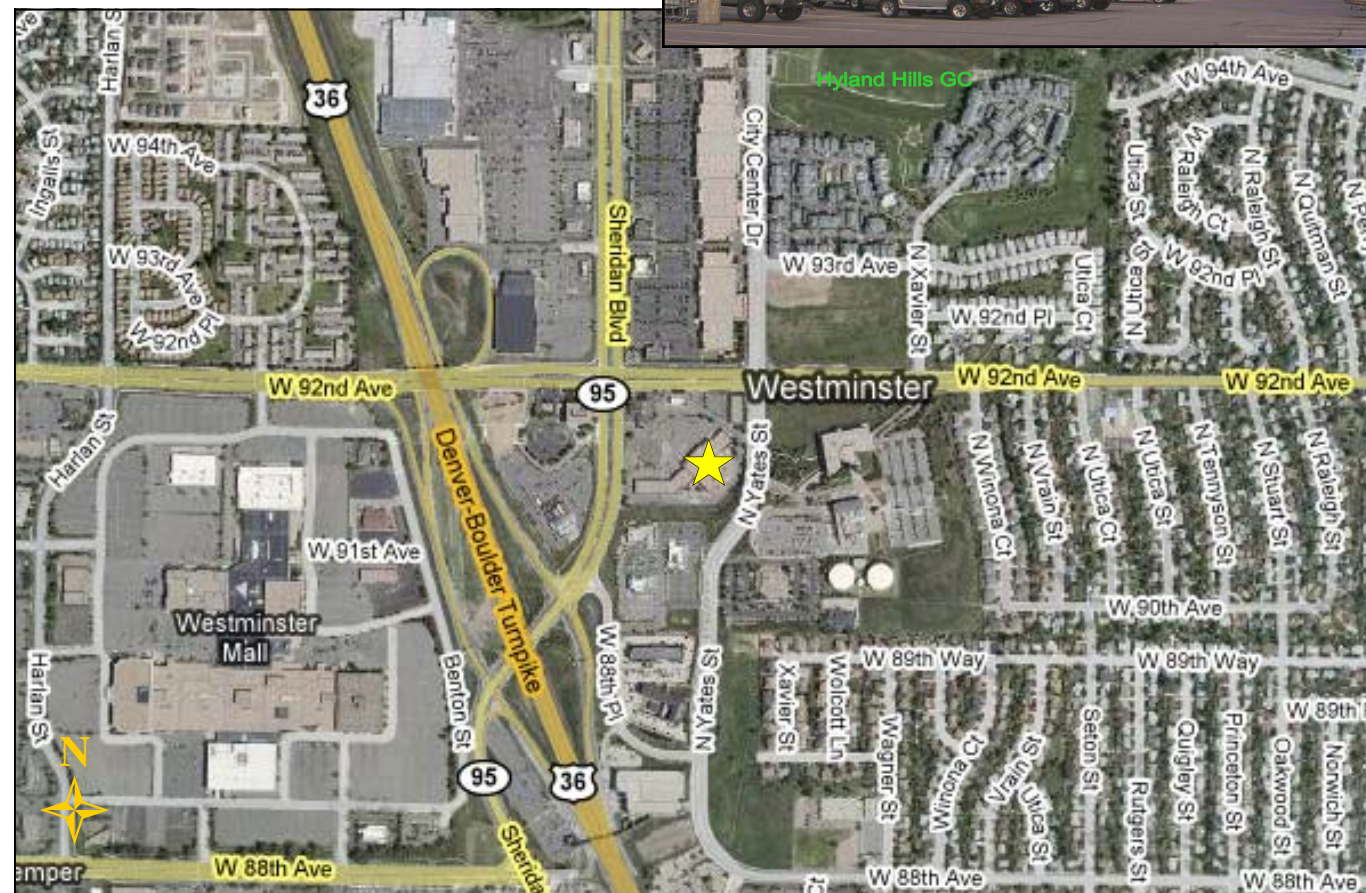
# Anchor Location Available For Lease

**NORTHVIEW SHOPPING CENTER** 5036 W. 92nd Avenue, Westminster, CO 80030 (Store 872)

PRIME RETAIL LOCATION on the SEC of Sheridan Blvd. & 92nd Ave.

## HIGHLIGHTS

- ◆ 43,146 SF of anchor space available.
- ◆ Located in the core of Westminister retail.
- ◆ Great visibility, strong traffic counts and signaled access on Sheridan Blvd. & 92<sup>nd</sup> Avenue.
- ◆ Vibrant area of high growth and expansive residential development.

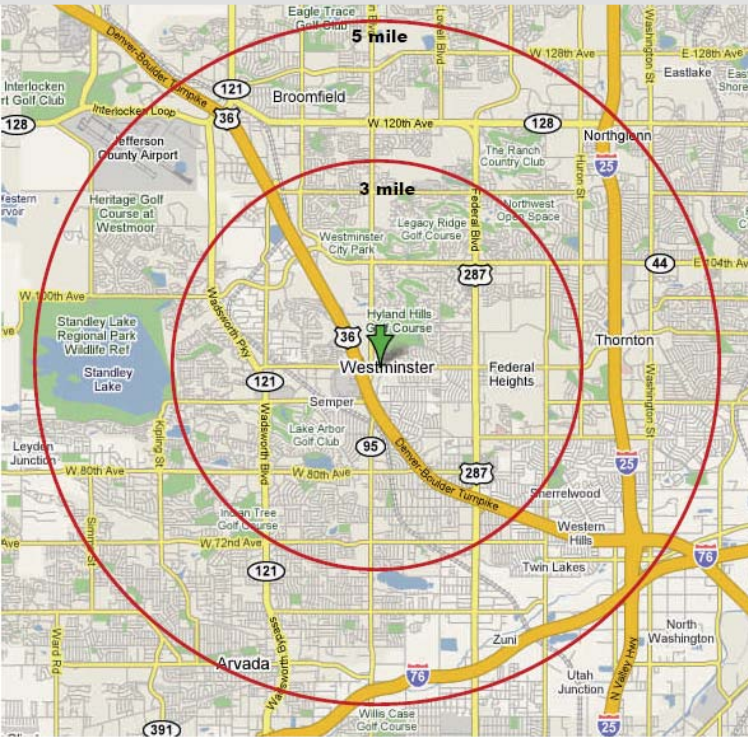


**INLAND WESTERN**

Retail Real Estate Trust, Inc.

# NORTHVIEW SHOPPING CENTER

Available Space: 43,146 square feet - can be demised



## 2012 Demographics:

	<u>Population</u>	<u>HH Income</u>
1 mile radius:	11,471	\$ 68,007
3 mile radius:	137,674	\$ 65,065
5 mile radius:	312,750	\$ 65,216



**Leased By:**



**Jed Craig**  
 2901 Butterfield Rd  
 Oak Brook, IL 60523  
 630.646.5263  
 Jed.Craig@inland-western.com