

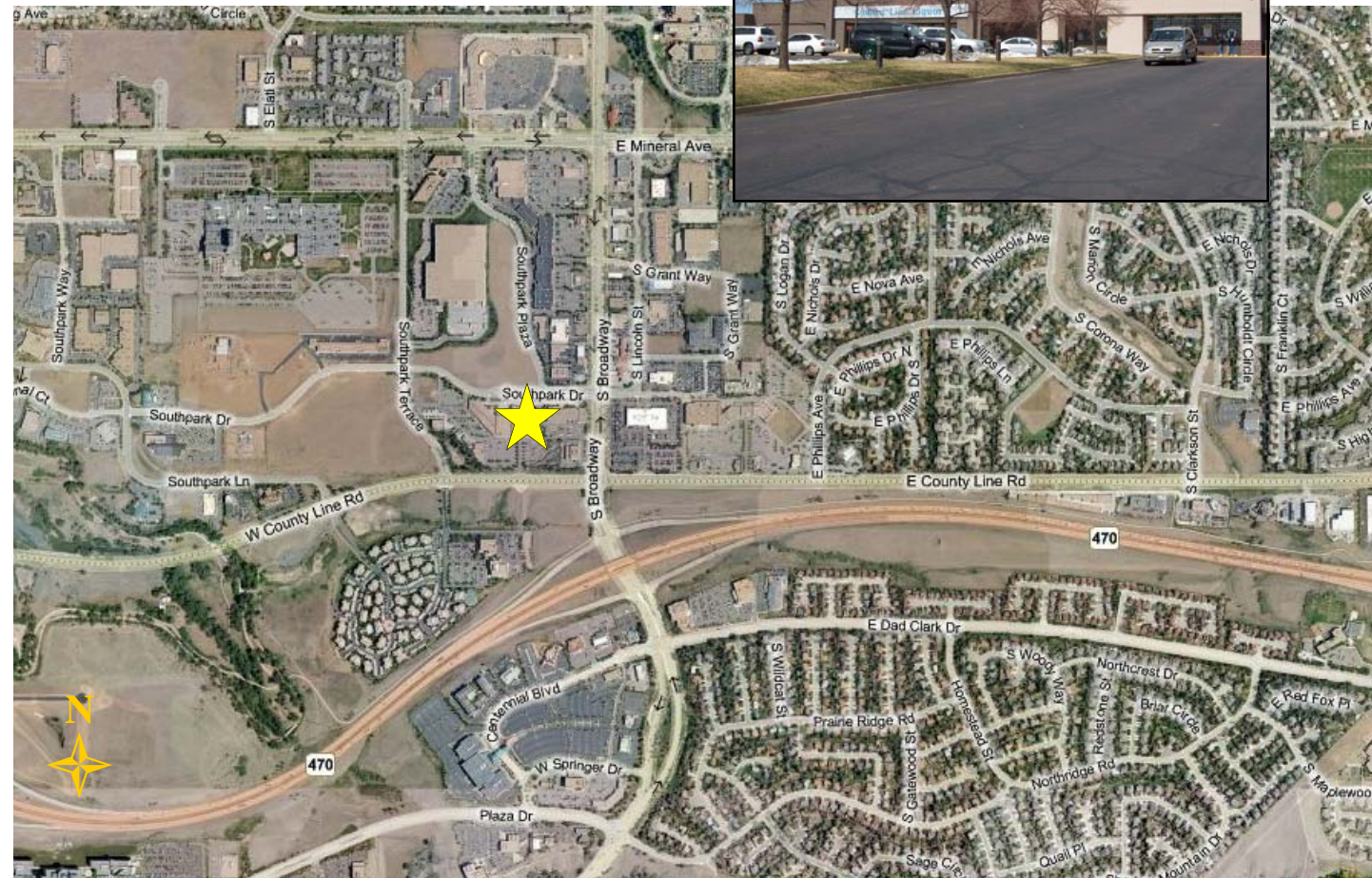
# South Park Centre

**SOUTH PARK CENTRE** 161 W. County Line Rd, Littleton, CO 80020 (Store 871)

PRIME RETAIL LOCATION on the NWC of W. County Line Rd. and S. Broadway

## HIGHLIGHTS

- Located at the busy signalized W. County Line Rd. and S. Broadway
- One of the fastest growing planned communities in the nation, with the spendable income today's expanding retailers demand.



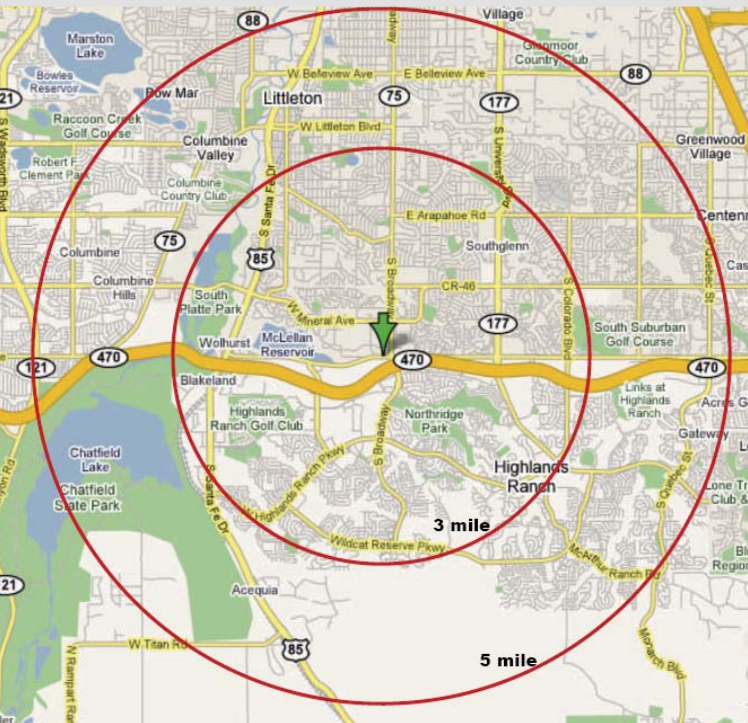
**INLAND WESTERN**  
Retail Real Estate Trust, Inc.

*in partnership with*

**HAMPTON**  
PARTNERS

# SOUTHPARK CENTRE

161 W. County Line Road, Littleton, CO 80020



## 2012 Demographics:

	<u>Population</u>	<u>HH Income</u>
1 mile radius:	7,483	\$ 96,629
3 mile radius:	95,838	\$ 102,181
5 mile radius:	232,806	\$ 98,437

## Traffic Counts:

W. County Line Rd & S. Broadway: 16,785 ADT



**Leased  
By:**



**Jed Craig**  
2901 Butterfield Rd  
Oak Brook, IL 60523  
877.646.5263  
Jed.Craig@inland-western.com