

Grapevine Crossing

State Highway 114 & Ira E. Woods Avenue, Grapevine, TX 76051



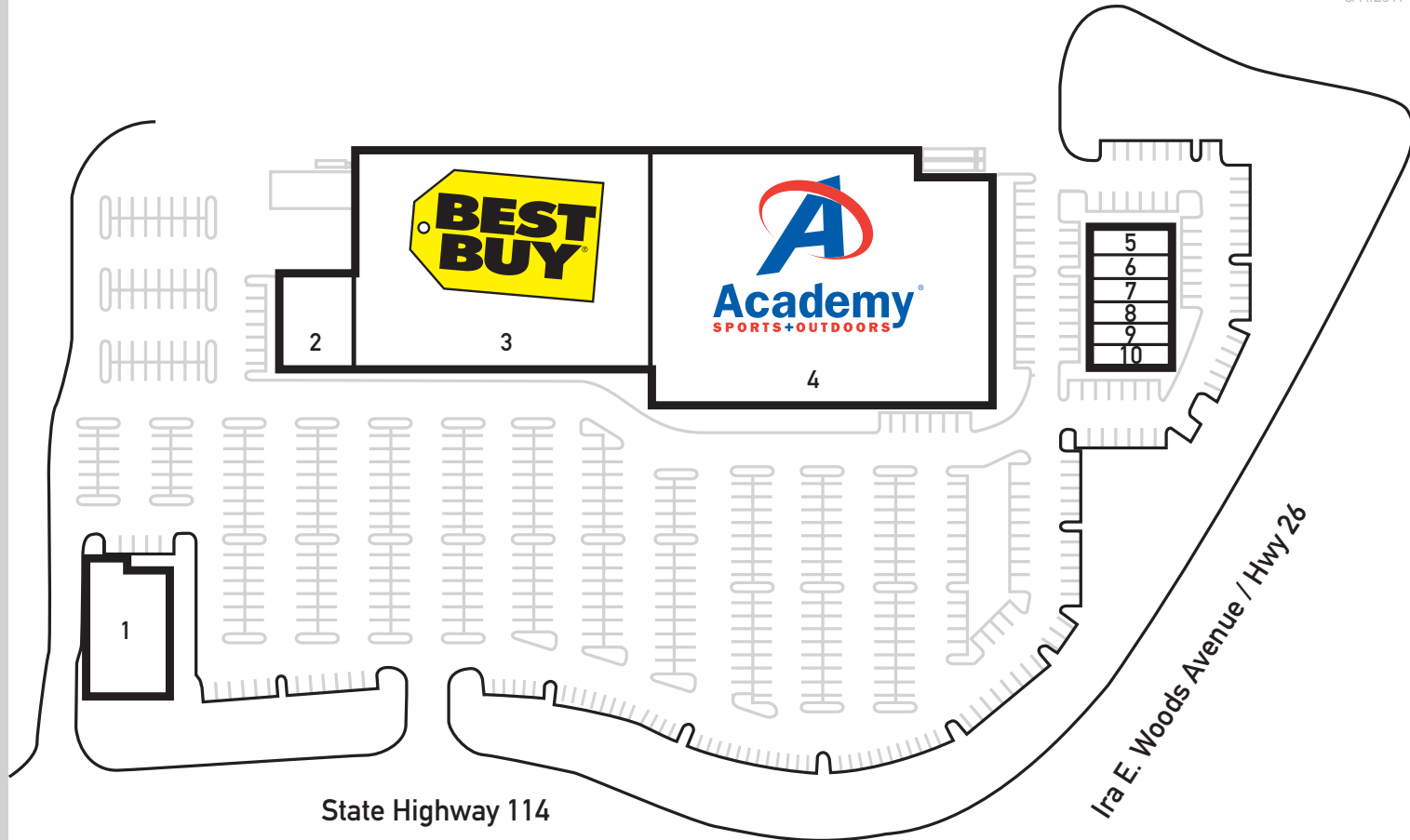
INLAND WESTERN

Retail Real Estate Trust, Inc.

5/11/2011

Center Size: 125,381 Sq. Ft.

| Unit# | Sq. Ft. | Tenant |
|-------|---------|------------------------|
| 1 | 7,500 | Toya Sushi Bar & Grill |
| 2 | 5,200 | Mattress Firm |
| 3 | 45,000 | Best Buy |
| 4 | 60,250 | Academy Sports |
| 5 | 1,050 | Advance America |
| 6 | 1,050 | The UPS Store |
| 7 | 1,200 | Elite Nails |
| 8 | 1,471 | Metro PCS |
| 9 | 1,260 | Sport Clips |
| 10 | 1,400 | Quiznos Subs |



NORTH

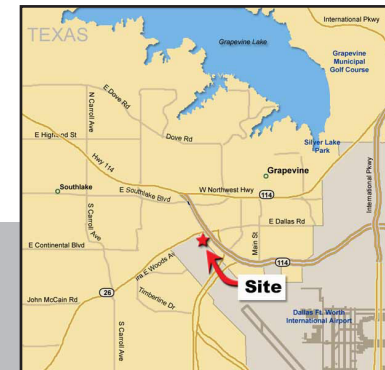
Information given in this presentation is subject to verification and no liability for errors or omissions is assumed.



2011 Demographics

| Population | Average HH Income |
|----------------|-------------------|
| 1 Mile 5,750 | 1 Mile \$ 65,443 |
| 3 Mile 46,292 | 3 Mile \$102,276 |
| 5 Mile 107,872 | 5 Mile \$121,551 |

Property managed by Inland Southwest Management, LLC
The Inland name and logo are registered trademarks being used under license.



Leasing Contact: **Jason Kasal**
kasal@inland-western.com • 877.646.5263

www.inland-western.com